

MANUAL

SF 200SE



Technical data

Current: 200-240 V, 50-60 Hz

Max vacuum: >2100 mm Vp

Air flow: 150 m³/h

Filter: 3-layer filter (Pre-, Fine- and Micro-filter), with an efficiency of 99,997% for particles >0,0003 mm. A carbon filter is available on request.

Handling

Attach one end of the hose to the inlet pipe of the smoke filter and the other end to the nozzle. SF 200SE is suitable for light welding.

Maintenance

The SF 200SE has a spark trap in the filter gable, behind the inlet pipe. This trap is easily accessible by releasing the toggle fasteners and unhooking the gable. The spark trap must be checked and cleaned regularly.

Changing the filter

Please note that the SF 200SE is equipped with an automatic switch that will cut the current supply to the engines when the filter is full. N.B! ALWAYS change the filter if it is full. Cleaning the filter will damage it and may cause engine breakdown.

Service

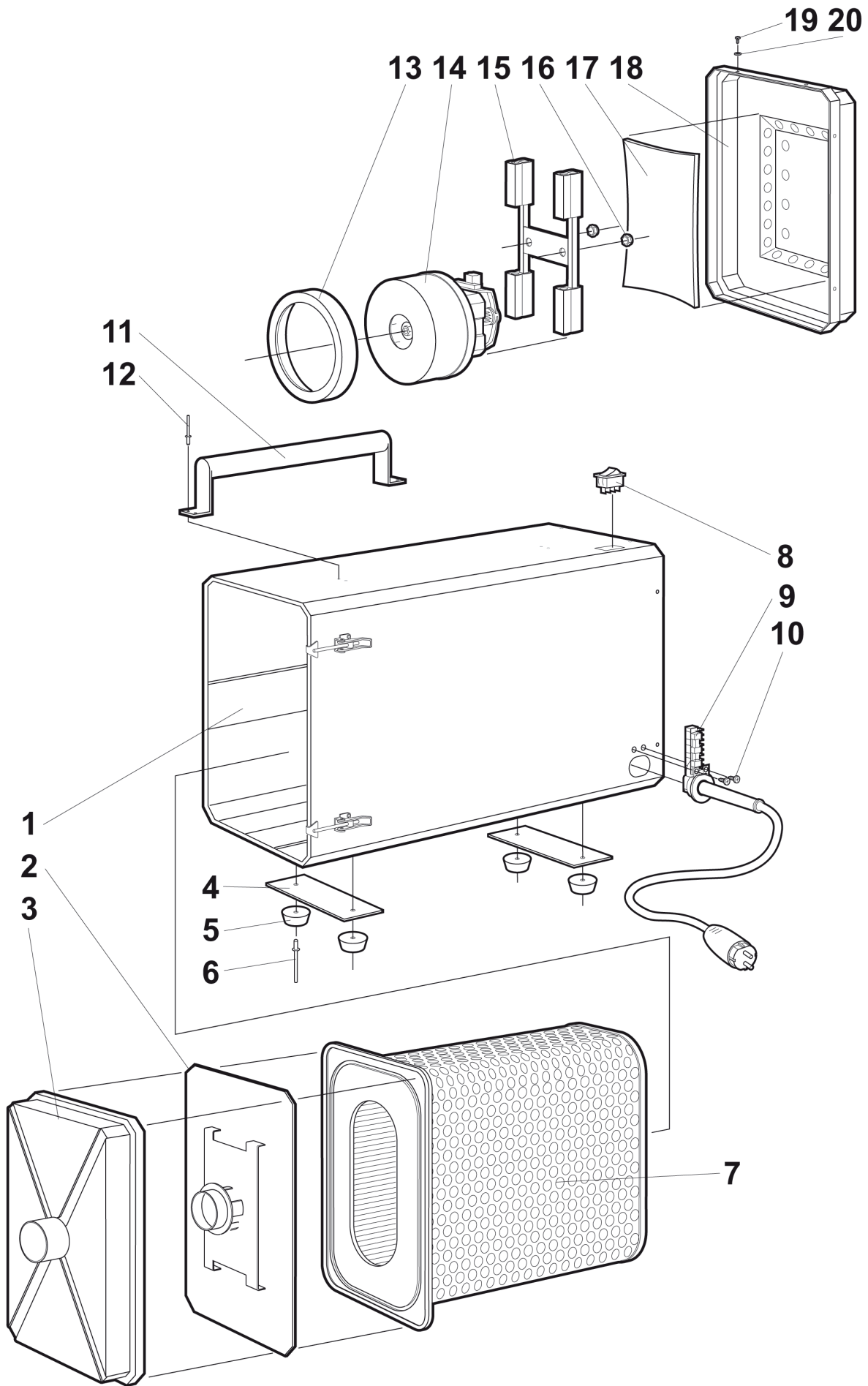
After 1000-1200 working hours, the engine carbon-brushes must be changed. Your retailer will do that for you.

Trouble shooting

When the filter is full the engines will switch off. After changing filters, the smoke filter should start running again.

FUMEX®

Verkstadsvägen 2, 931 61 SKELLEFTEÅ, Sweden
Skellefteå: Tel. 0910-361 80, Fax 0910-13022
www.fumex.se info@fumex.se



FUMEX®

Verkstadsvägen 2, 931 61 SKELLEFTEÅ, Sweden
 Skellefteå: Tel. 0910-361 80, Fax 0910-13022
www.fumex.se info@fumex.se