



# FBE 1100

Centrifugal fan for high-volume airflows with high total efficiency according to ErP2015.



**FUMEX FBE 1100**  
optimised for  
Fumex industrial  
systems.

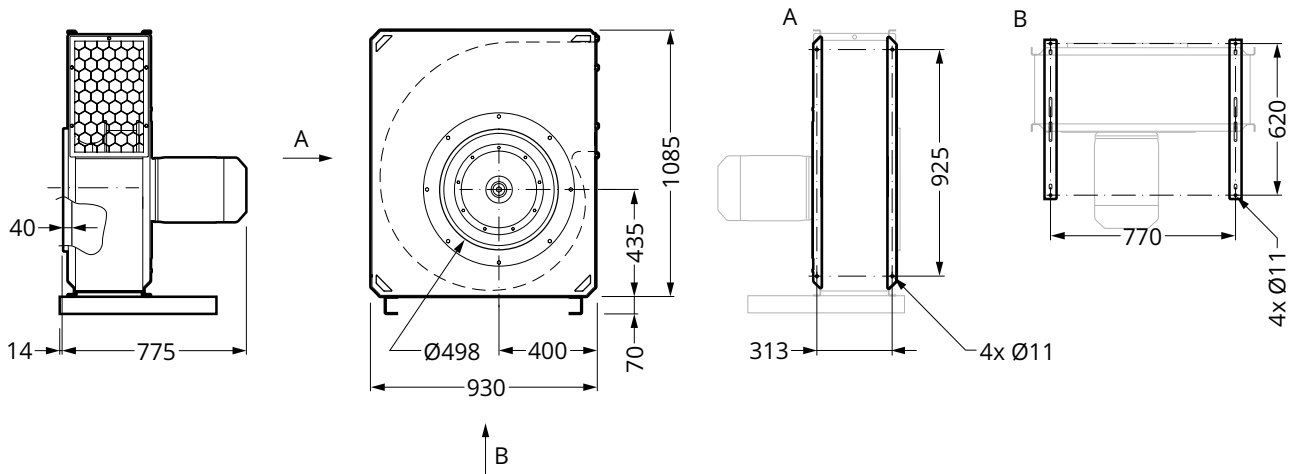


## Centrifugal fan for high-volume airflows with high total efficiency according to ErP2015.

**FUMEX FBE 1100** – an energy-efficient fan designed for industrial environments, which can be installed either indoors or outdoors. Ideal for expelling non-explosive gases, fumes and lighter particles with an airflow of up to 15,000 m<sup>3</sup>/h (4,160 l/s). The impeller has curved blades and is made from welded sheet metal.

The fan is optimised for use with Fumex fume extraction systems and automatic control equipment. There are a number of accessories available for the FBE series to make installation and use easier and more efficient.

## Dimensional drawing (mm)



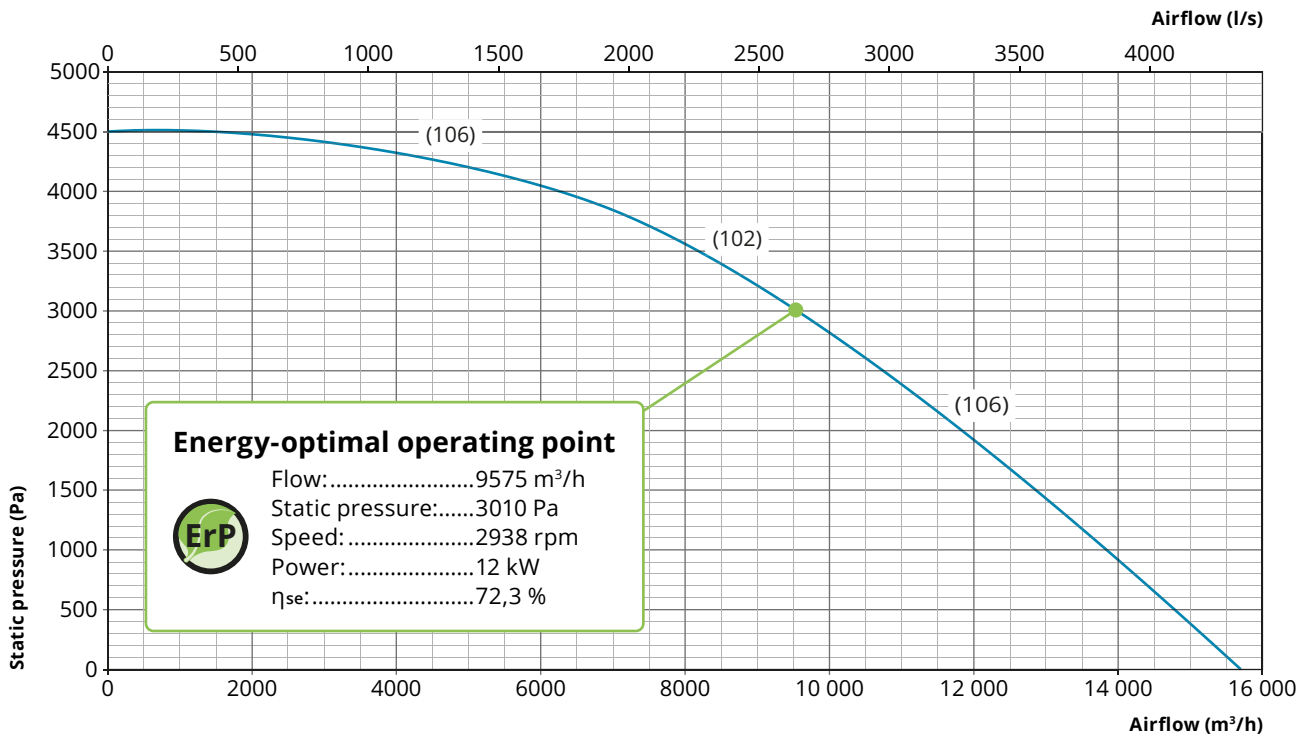
### Version (view from inlet side)

The fan is available as standard in the following versions:



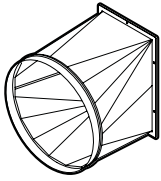
**■** Standardised delivery version

## Performance (Fan noise in brackets)



Ambient fan noise, as measured 1 metre from fan dB(A).

## Accessories



### Transition FBO 1100

Transition for round connection.



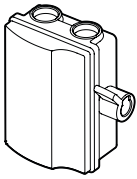
### Flexible duct FBD

For connection to the suction side, including 2 mounting clamps.



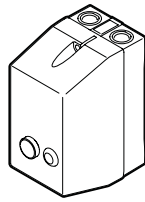
### Vibration damper Kit FBV

Kit with four vibration dampers in natural rubber with hardness 60° IRH.



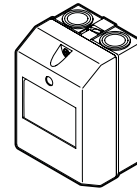
### Safety switch SSB 1100

With lockable toggle. Two M25 penetrations included. SSB 1100 EMC is copper-sheathed.



### Contactor SKO

3-pin contactor with overcurrent relay for manual reset. The overcurrent relay has phase loss protection. Used in together with external switches or control.



### Motor protection switch SMB

3-pin motor protection switch with thermal magnetic release equipped with phase fault protection. Designed for operating and protecting fan motors.

## Specifications

### Form of delivery

The fan is supplied in LG version as standard, for easy installation.

### Surface finishing

Sheet metal parts: Stainless steel, powder-coated or electro-galvanised.

### Motor

Motor type: 3-phase asynchronous motor  
Voltage: 400/690 V 3~  
Rated current: 19.6 A  
Rated power: 11 kW  
Speed: 2,950 rpm  
Enclosure: IP55

### Production

The FBE series of fans is manufactured in accordance with the following directives and standards:

- Machinery Directive 2006/42/EC
- EMC Directive 2014/30/EU
- EN ISO 12100:2010
- EN 60204-1
- ErP2015 2009/125/EC

### Additional information

Max. operating temperature: 80 °C  
Ambient temperature: -20 °C to +40 °C

### Weight

170 kg

FUMEX SUPPLIES EXTRACTOR ARMS · VEHICLE EXHAUST EXTRACTORS · FANS · FILTERS · CONTROLS · WORKSHOP EQUIPMENT

# FUMEX

Verkstadsvägen 2, 93161 Skellefteå, Sweden • Tel.: +46 910-361 80 • Fax: +46 910-130 22 • E-mail: info@fumex.se

[www.fumex.com](http://www.fumex.com)